

HEX-FLX ASSEMBLY INSTRUCTIONS

****FOR HDT HUBS ONLY****

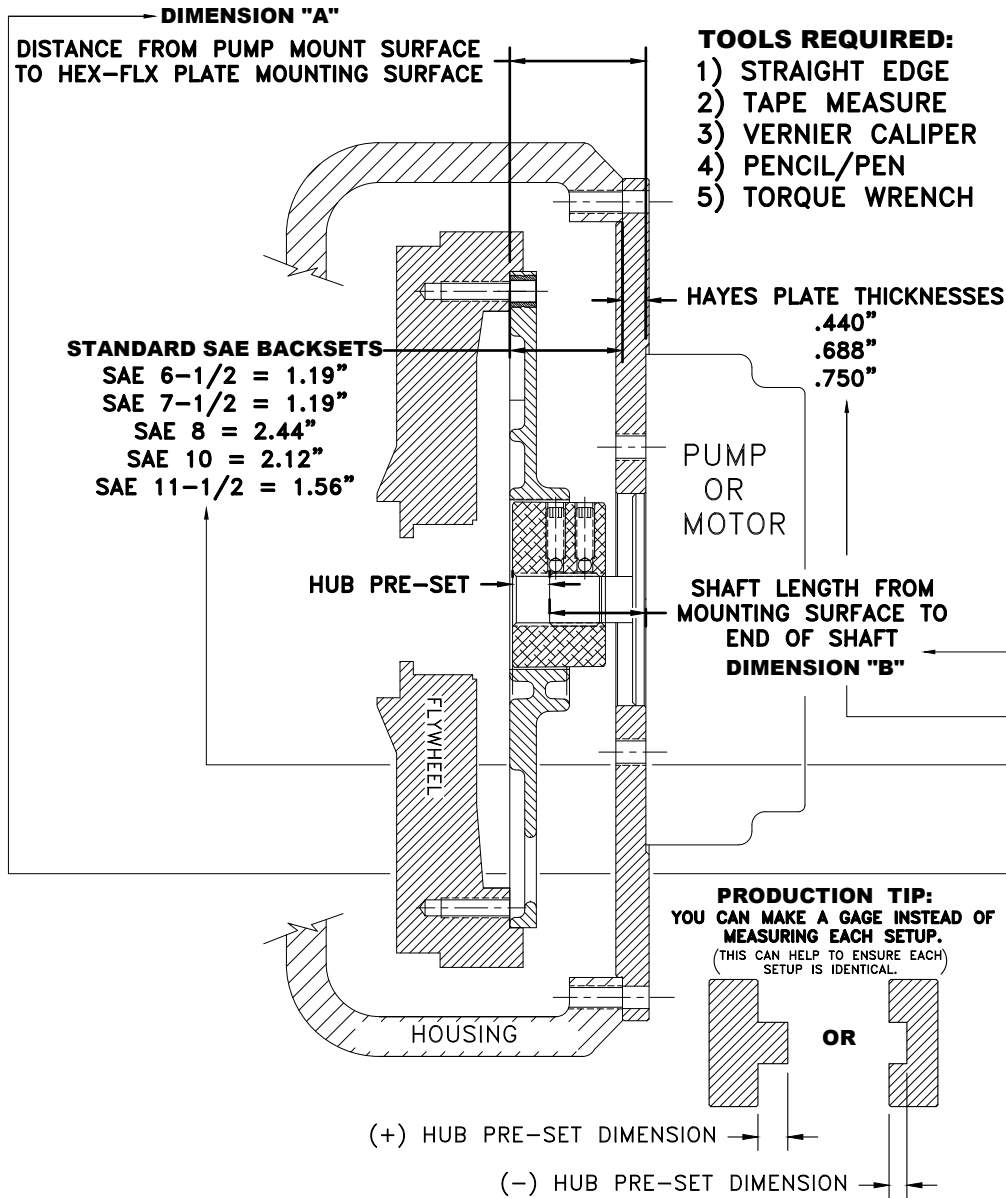
**IMPORTANT! TORQUE ALL 4 SETSCREWS TO 45 FT.LBS. USING TORQUE WRENCH
(ON SPLINED HUBS SET SCREWS DO NOT SHOW THROUGH)**

IMPORTANT! ASSEMBLY INSTRUCTIONS:

- 1) MEASURE OR CALCULATE THE DISTANCE FROM THE PUMP MOUNT SURFACE TO THE HEX-FLX PLATE (BLUE PLATE) MOUNTING SURFACE. (DIMENSION "A")
- 2) NEXT, MEASURE THE OVERALL LENGTH OF THE PUMP SHAFT FROM THE MOUNTING FACE OF THE PUMP TO THE END OF THE SHAFT. (DIMENSION "B")
- 3) ADD 0.052" TO THE "B" DIMENSION (DIMENSION "C")
- 4) COMPLETE THE CALCULATIONS BELOW
- 5) SPLINED SHAFTS SHOULD HAVE FULL ENGAGEMENT INTO THE HEX-FLX HUB. STRAIGHT BORE AND KEYED SHAFTS SHOULD HAVE A MINIMUM OF 3/4" OF ENGAGEMENT, IF NOT, CONTACT FACTORY FOR RECOMMENDATIONS (231) 879-3372.
- 6) **ONCE YOU HAVE LOCATED HUB PROPERLY, TORQUE ALL 4 SET SCREWS TO 45 FT.LBS. USING TORQUE WRENCH TO ENSURE PROPER CLAMPING.**

**IMPORTANT!
TORQUE ALL 4 SETSCREWS TO 45 FT.LBS. USING TORQUE WRENCH
(ON SPLINED HUBS SET SCREWS DO NOT SHOW THROUGH)**

PATENT PENDING



SEE DRAWING ON LEFT

$$\boxed{\text{DIMENSION B}} + 0.052" = \boxed{\text{DIMENSION C}}$$

$$\boxed{\text{BACKSET}} + \boxed{\text{PLATE THICKNESS}} = \boxed{\text{DIMENSION A}}$$

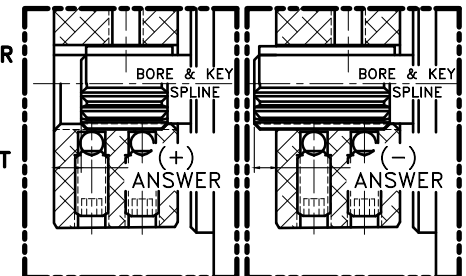
$$\boxed{\text{DIMENSION A}} - \boxed{\text{DIMENSION C}} = \boxed{\text{HUB PRE-SET}}$$

ATTENTION:

IF YOUR **HUB PRE-SET** ANSWER IS (+) SHAFT IS INSIDE OF HUB,

IF YOUR ANSWER IS (-) SHAFT STICKS OUT OF HUB.

SEE HUB PRE-SET EXAMPLE BOXES ----->



**IMPORTANT! TORQUE ALL 4 SETS CREWS TO 45 FT.LBS. USING TORQUE WRENCH
(ON SPLINED HUBS SET SCREWS DO NOT SHOW THROUGH)**